

CERTIFICATE OF LOCATION OF GOVERNMENT CORNER

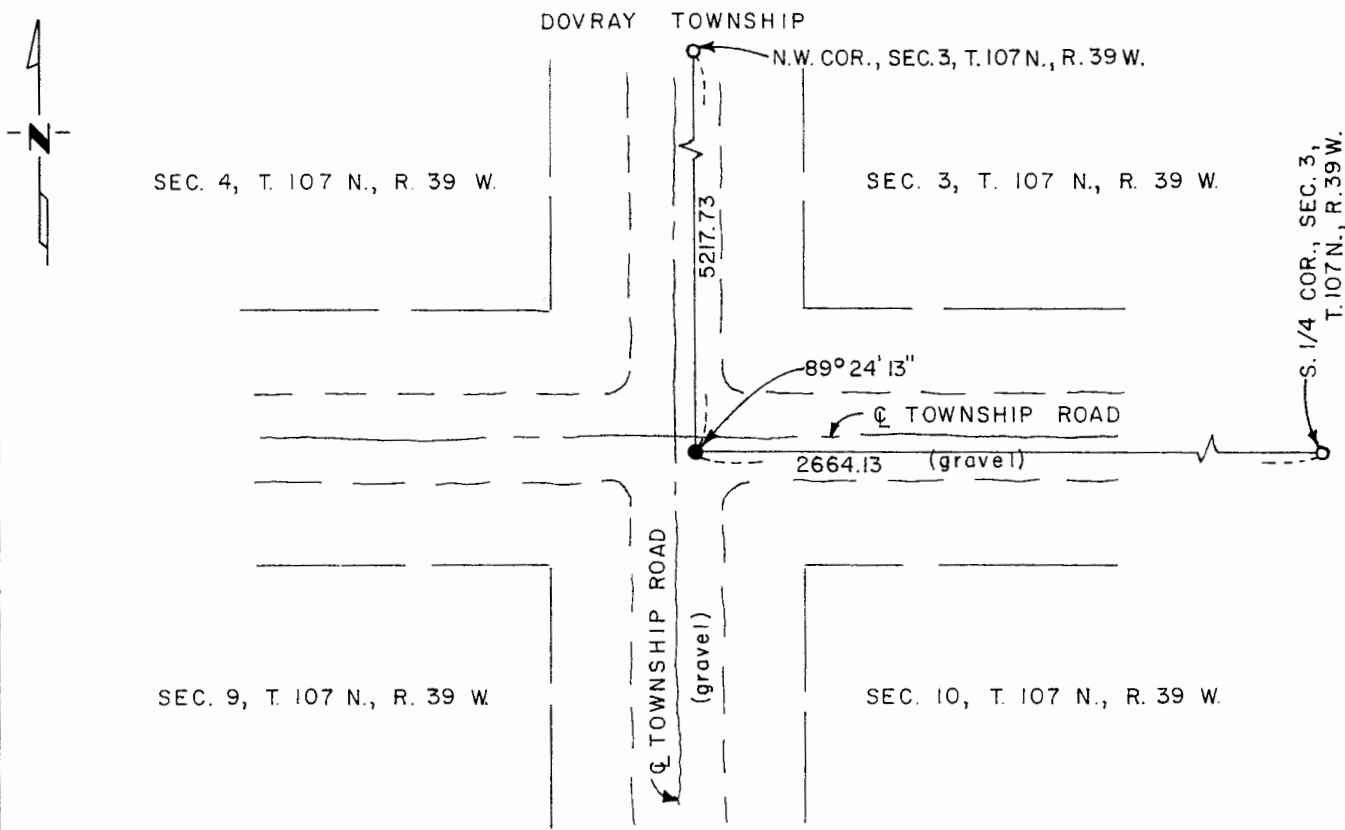
Southwest Corner of Section 3, Township 107 N., Range 39 W., 5th P.M.

STATE OF MINNESOTA, County of Murray

At the corner location shown on the sketch:

- On Oct. 9, 1980 found a blue granite stone; stone was 3.2' E. & 2.0' S. of the intersection of both Township Road center lines.
DATE
- left monument as found, lowered monument, removed monument (explain)
- On Oct. 9, 1980 placed a 1/2" iron reinforcing bar with "L.S. 12967" cap above the blue granite stone.
DATE

SKETCH OF REFERENCE TIES



I hereby certify that this document and the data contained herein was prepared by me or under my direct supervision.

Ray S. Nantz 12/28/81
SIGNATURE DATE

Registration No. 12967

Land Surveyor, Professional Engineer

County Surveyor, County Engineer

OFFICE OF THE COUNTY RECORDER
 County of Murray

I hereby certify that this document was filed in the Co. Recorders office at 10 A. .M. on the 18th day of February A.D., 19 82

County Recorder *Willard W. Orme*

By _____, Deputy

DOCUMENT NO. _____